



Official Use

Conferencia Interamericana de Seguridad Social
Inter-American Conference on Social Security

CISS/WP/05132

October-2005

English – Or. English

Official Use

CISS/WP/05132

Causes of Disability in the Americas, 2002

For comments or suggestions, please contact Martha Miranda
m.miranda@ciss.org.mx or Monica Morales m.morales@ciss.org.mx

English - Or. English

I. Introduction

One of the most relevant issues presented in the Chapter number III of the Annual CISS Report¹, “Facing Disability in the Americas: Legislation, Employment Programs, and Insurance Mechanisms”, is an analysis of the causes of disability in the countries of the Continent. This has been possible thanks to the availability of data provided by the WHO on specific causes of disease that lead to disability, at the country level.

This document is as an appendix to Section III.2 in Chapter III of the CISS Report 2006. It presents data that adds information to the discussion presented in the Chapter for those interested in having a better picture on the causes of disability in the Americas. It uses data on causes of Years Lived with Disabilities (YLD) constructed from Disability Adjusted Life Years (DALYs) in the Global Burden of Disease Project (WHO), for the year 2002.

The document has four parts in which a set of Tables and Figures are presented. Part II compares the proportion of YLD² in the Americas and in the rest of the World, by cause of disability. The leading causes of YLD in the World are neuropsychiatric conditions, sense organ diseases, infectious and parasitic diseases, and unintentional injuries--from which the Americas contribute largely to the YLD caused by neuropsychiatric conditions. This part also shows the distribution of the three main groups of diseases--i) communicable, maternal, perinatal and nutritional conditions, ii) non-communicable diseases, and iii) injuries--that cause disability by WHO regions³. Part III presents information of the distribution of YLD by gender and age. In the Americas non-communicable conditions are the main causes of YLD for both men and women in all age groups. Communicable, maternal, perinatal and nutritional conditions are present among children and women, while injuries are more related to men. Part IV presents the YLD caused by specific conditions within the five CISS-Regions: Andean, Central America, Southern Cone, North America and English-Speaking Caribbean, and Mexico and Latin Caribbean.

¹ The Americas Social Security Report 2006, “The Challenges of Aging and Disability: Employment and Insurance; and International Social Security Agreements”

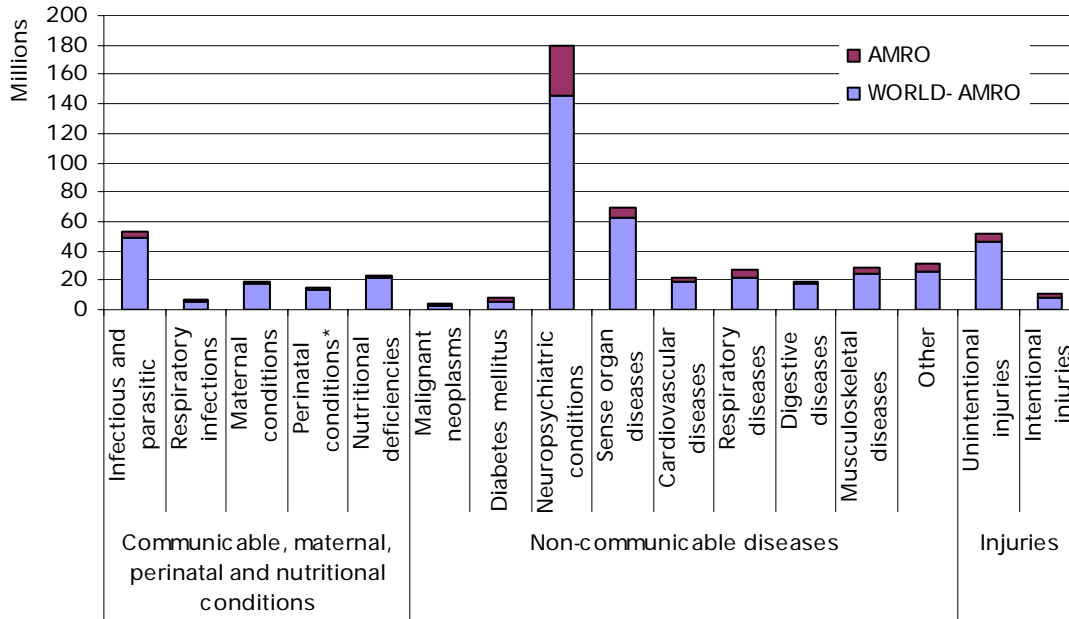
² YLD are calculated with the following formula: $YLD = I DW C e^{(ra)} / (E+r)^2 [e^{-(E+r)(L+a)} [-(E+r)(L+a)-1] - e^{-(E+r)a} [-(E+r)a-1]]$ where DW is the disability weight, r is the discount rate (GBD standard value is 0.03), C is the age-weighting correction constant (GBD standard value is 0.1658), E is the parameter from the age-weighting function (GBD standard value is 0.04), a is the age of onset, and L is the duration of disability (Mathers et al 2001).

³ See Appendix 1 for WHO-Regions. These are different to the CISS-regions presented in the CISS-Report 2006.

II. Causes of Disability: Comparing Health Outcomes between the Americas and the World

Figure II.1

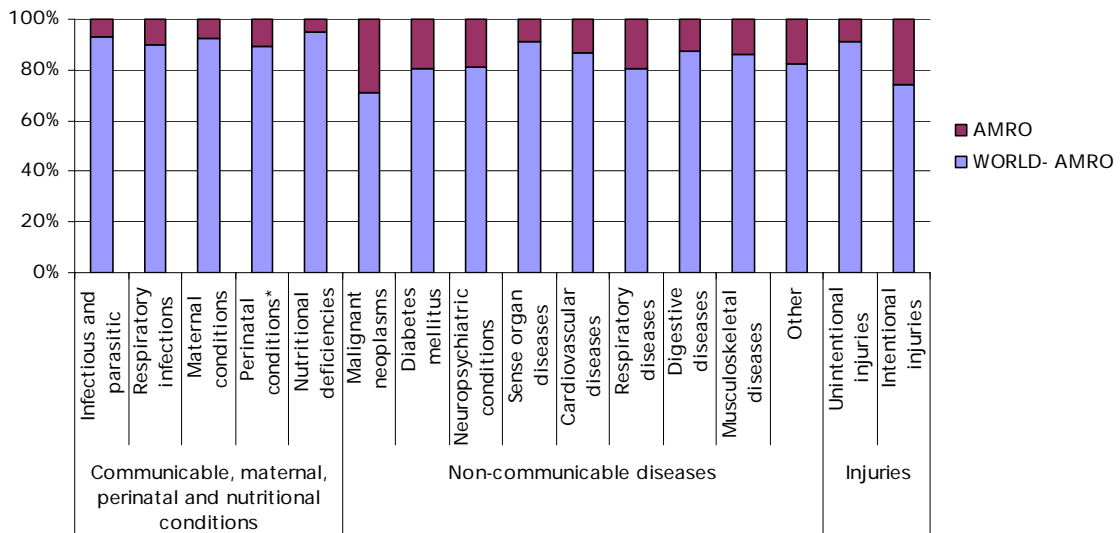
Millions of Years Lived with Disabilities in the Americas and in the Rest of the World



Note: AMRO: WHO Region of the Americas.
Source: WHO (2004).

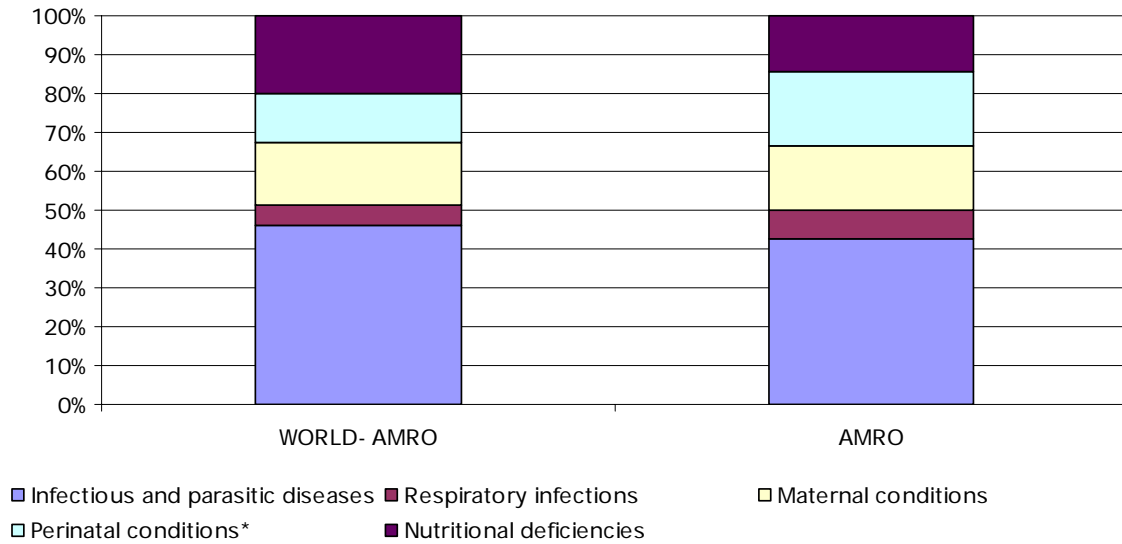
Figure II.2

Proportion of Years Lived with Disabilities in the Americas and in the Rest of the World by Cause, 2002



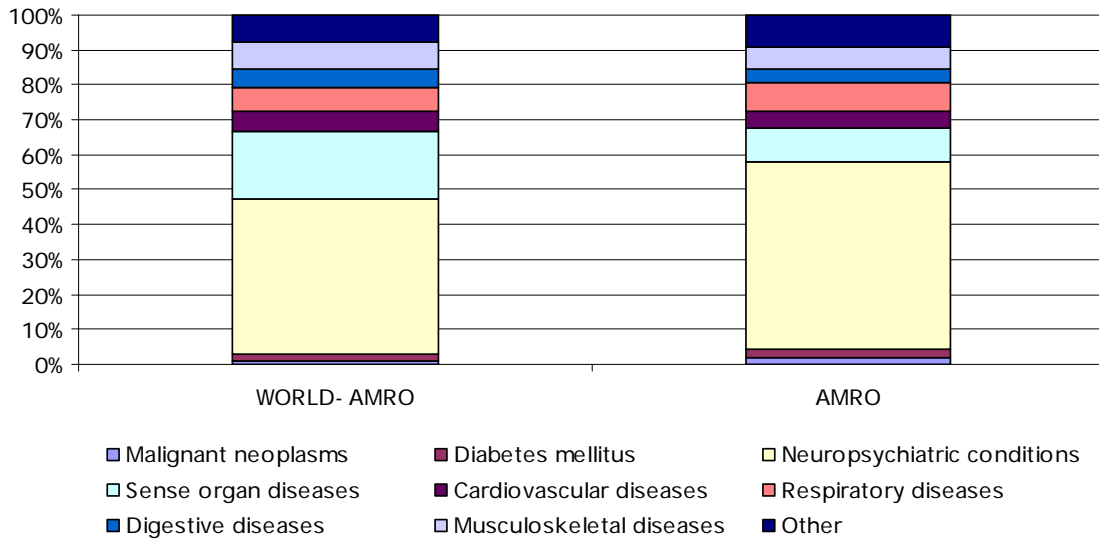
Note: AMRO: Regional Office for the Americas.
Source: WHO (2004).

Figure II.3
Proportion of Years Lived with Disabilities Due to Communicable, Maternal, Perinatal and Nutritional Conditions in the Americas and in the Rest of the World



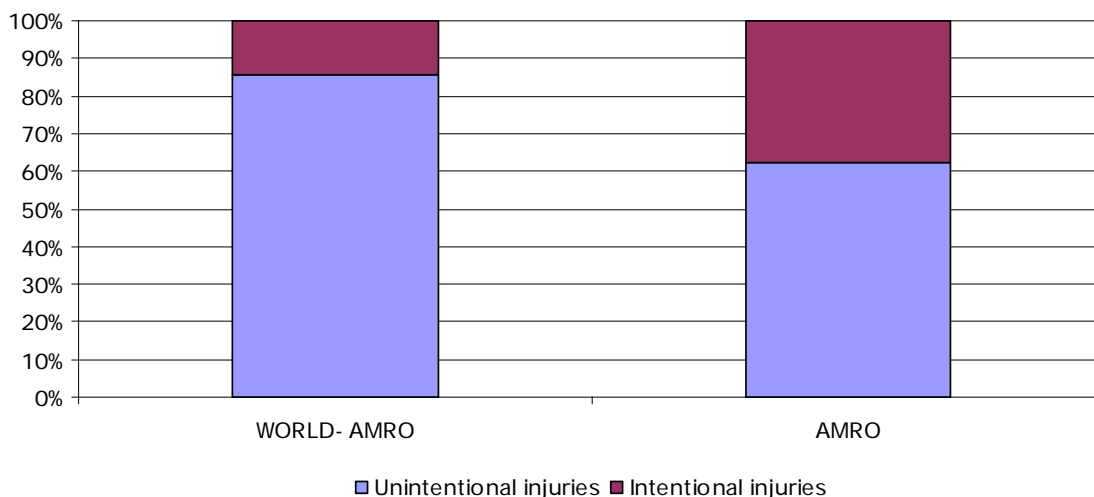
Note: AMRO: WHO Region of the Americas.
 Source: WHO (2004).

Figure II.4
Proportion of Years Lived with Disabilities Due to Non-communicable Diseases in the Americas and in the Rest of the World



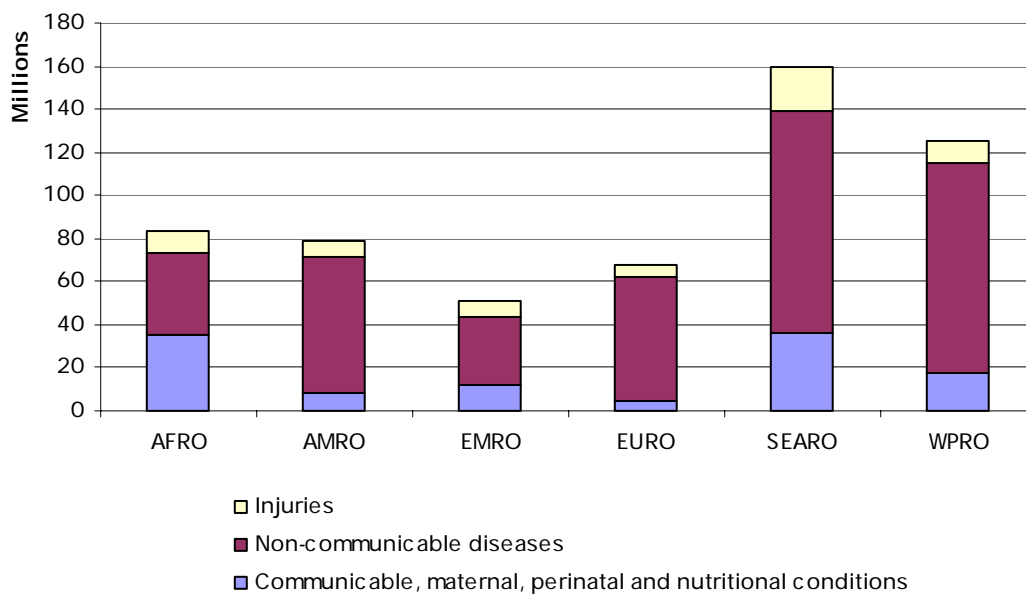
Note: AMRO: WHO Region of the Americas.
 Source: WHO (2004).

Figure II.5
Proportion of Years Lived with Disabilities Due to Injuries in the Americas and in the Rest of the World



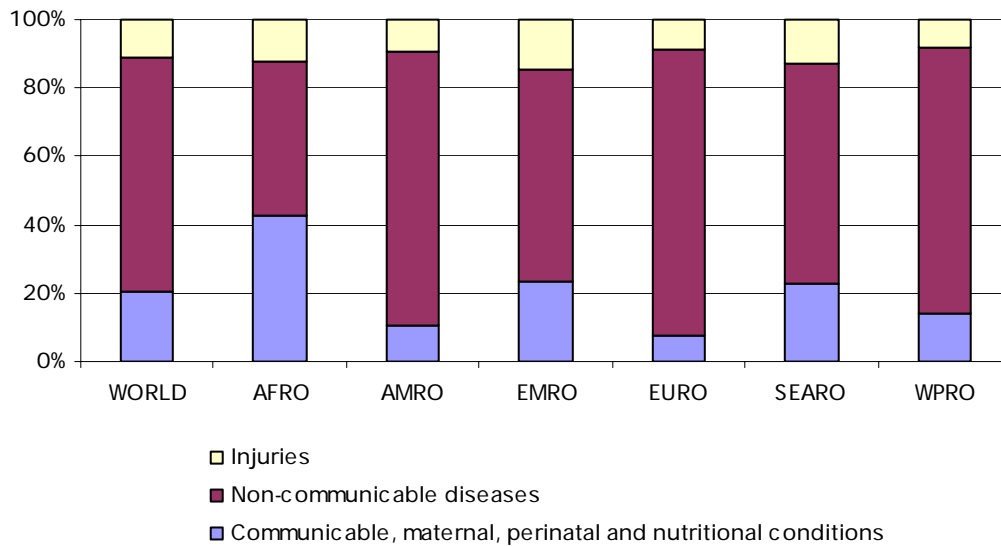
Note: AMRO: WHO Region of the Americas.
Source: WHO (2004).

Figure II.6
Millions of Years Lived with Disabilities by Main Causes in WHO-Regions, 2002



Note: AMRO: Region of the Americas; EMRO: Eastern Mediterranean Region; EURO: European Region; SEARO: South-East Asia Region; WPRO: Western Pacific Region. See appendix 1 for countries in each WHO-Region.
Source: WHO (2004).

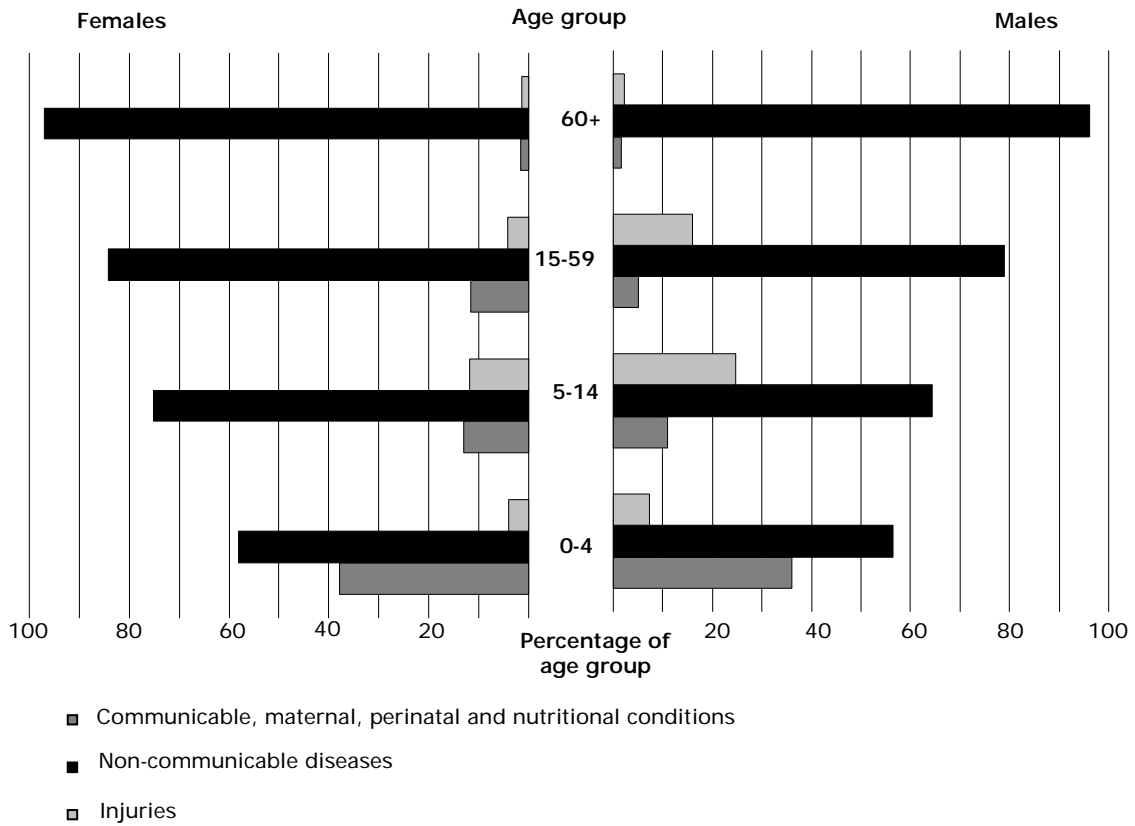
Figure II.7
Proportion of Years Lived with Disabilities by Main Causes in WHO-Regions, 2002



Note: AMRO: WHO Region of the Americas; EMRO: WHO Eastern Mediterranean Region; EURO: WHO European Region; SEARO: WHO South-East Asia Region; WPRO: WHO Western Pacific Region.
Source: WHO (2004).

III. Causes of disability by age and gender in the Americas

Figure III.1
Distribution of Years Lived with Disabilities (YLDs) by Cause, Age, and Gender in the Americas, 2002



Source: Calculations using data provided by the WHO 2004.

Table III.1
Causes of Years Lived with Disabilities for Men by Age Group in AMRO A (WHO Sub-region with very low child mortality and low adult mortality), 2002

Cause	AMRO A														
	0-4			5-14			15-59			60-80+			Total		
	YLDs	% group	% cause	YLDs	% group	% cause	YLDs	% group	% cause	YLDs	% group	% cause	YLDs	% group	% cause
All Causes	589711	100	4.5	768418	100	5.9	9329718	100	71.4	2372844	100.0	18.2	13060691	100	100
I. Communicable, maternal, perinatal and nutritional conditions	184024	31.2	30.0	40464	5.3	6.6	360588	3.9	58.7	29136	1.2	4.7	614212	4.7	100
Infectious and parasitic diseases	51541	8.7	20.0	13555	1.8	5.3	184630	2.0	71.6	8064	0.3	3.1	257789	2.0	100
Nutritional deficiencies	20209	3.4	9.5	8565	1.1	4.0	165797	1.8	77.7	18944	0.8	8.9	213515	1.6	100
II. Non-communicable diseases	361521	61.3	3.1	605691	78.8	5.2	8393086	90.0	71.9	2308874	97.3	19.8	11669171	89.3	100
Malignant neoplasms	671	0.1	0.2	997	0.1	0.3	133403	1.4	38.2	214175	9.0	61.3	349246	2.7	100
Diabetes mellitus	262	0.0	0.1	1440	0.2	0.3	328204	3.5	76.4	99506	4.2	23.2	429412	3.3	100
Neuropsychiatric conditions	81104	13.8	1.3	388450	50.6	6.3	5138385	55.1	82.8	598234	25.2	9.6	6206172	47.5	100
Sense organ diseases	48	0.0	0.0	239	0.0	0.0	560880	6.0	56.3	435161	18.3	43.7	996328	7.6	100
Cardiovascular diseases	843	0.1	0.1	1921	0.3	0.3	409770	4.4	53.7	349847	14.7	45.9	762382	5.8	100
Respiratory diseases	61694	10.5	5.2	140503	18.3	11.8	788663	8.5	66.3	198557	8.4	16.7	1189417	9.1	100
Digestive diseases	19046	3.2	5.7	9896	1.3	2.9	222548	2.4	66.3	84016	3.5	25.0	335505	2.6	100
Musculoskeletal diseases	2169	0.4	0.3	12054	1.6	1.8	458205	4.9	69.0	192036	8.1	28.9	664465	5.1	100
Other noncommunicable conditions	195684	33.2	26.6	50189	6.5	6.8	353028	3.8	47.9	137342	5.8	18.7	736243	5.6	100
III. Injuries	44166	7.5	5.7	122264	15.9	15.7	576045	6.2	74.1	34834	1.5	4.5	777308	6.0	100

Note: See appendix 2 for countries in each WHO Sub-Region in the Americas
Source: Calculations using data provided by the WHO 2004.

Table III.2
Causes of Years Lived with Disabilities for Men by Age Group in AMRO B (WHO Sub-region with low child mortality and low adult mortality), 2002

AMRO B															
Cause	0-4			5-14			15-59			60-80+			Total		
	YLDs	% group	% cause	YLDs	% group	% cause	YLDs	% group	% cause	YLDs	% group	% cause	YLDs	% group	% cause
All Causes	3077750	100	13.6	2297540	100	10.1	15458282	100	68.2	1842663	100	8.1	22676234	100	100
I. Communicable, maternal, perinatal and nutritional conditions	1107716	36.0	50.4	269261	11.7	12.2	785498	5.1	35.7	37368	2.0	1.7	2199843	9.7	100
Infectious and parasitic diseases	224444	7.3	19.2	181050	7.9	15.5	731277	4.7	62.5	32962	1.8	2.8	1169733	5.2	100
Nutritional deficiencies	167410	5.4	73.7	25148	1.1	11.1	32206	0.2	14.2	2345	0.1	1.0	227109	1.0	100
II. Non-communicable diseases	1753114	57.0	10.8	1407766	61.3	8.7	11296757	73.1	69.7	1750261	95.0	10.8	16207898	71.5	100
Malignant neoplasms	1079	0.0	1.8	1703	0.1	2.9	27672	0.2	46.5	29000	1.6	48.8	59455	0.3	100
Diabetes mellitus	156	0.0	0.1	1010	0.0	0.5	149796	1.0	76.5	44753	2.4	22.9	195715	0.9	100
Neuropsychiatric conditions	850063	27.6	9.5	739306	32.2	8.2	7048983	45.6	78.5	336092	18.2	3.7	8974444	39.6	100
Sense organ diseases	3155	0.1	0.2	13318	0.6	0.8	1134793	7.3	65.6	579774	31.5	33.5	1731040	7.6	100
Cardiovascular diseases	2881	0.1	0.4	12496	0.5	1.9	411508	2.7	61.7	240378	13.0	36.0	667263	2.9	100
Respiratory diseases	143314	4.7	10.6	249523	10.9	18.5	803651	5.2	59.6	151453	8.2	11.2	1347941	5.9	100
Digestive diseases	59954	1.9	8.3	46806	2.0	6.5	503878	3.3	69.8	111269	6.0	15.4	721907	3.2	100
Musculoskeletal diseases	6986	0.2	0.9	46609	2.0	5.7	610710	4.0	75.0	149505	8.1	18.4	813809	3.6	100
Other noncommunicable conditions	685526	22.3	40.4	296995	12.9	17.5	605766	3.9	35.7	108036	5.9	6.4	1696324	7.5	100
III. Injuries	216920	7.0	5.1	620513	27.0	14.5	3376026	21.8	79.1	55034	3.0	1.3	4268493	18.8	100

Note: See appendix 2 for countries in each WHO Sub-Region in the Americas

Source: Calculations using data provided by the WHO 2004.

Table III.3
Causes of Years Lived with Disabilities for Men by Age Group in AMRO D (WHO Sub-region with high child mortality and high adult mortality), 2002

Cause	AMRO D												Total		
	0-4			5-14			15-59			60-80+					
	YLDs	% group	% cause	YLDs	% group	% cause	YLDs	% group	% cause	YLDs	% group	% cause	YLDs	% group	% cause
All Causes	649425	100	18.1	504767	100	14.1	2211087	100	61.7	216441	100	6.0	3581720	100	100
I. Communicable, maternal, perinatal and nutritional conditions	267375	41.2	46.6	80531	16.0	14.0	220352	10.0	38.4	5994	2.8	1.0	574253	16.0	100
Infectious and parasitic diseases	56064	8.6	18.2	59062	11.7	19.2	189114	8.6	61.4	3864	1.8	1.3	308104	8.6	100
Nutritional deficiencies	56946	8.8	63.8	8151	1.6	9.1	22557	1.0	25.3	1662	0.8	1.9	89317	2.5	100
II. Non-communicable diseases	326697	50.3	13.3	285377	56.5	11.6	1637709	74.1	66.8	201084	92.9	8.2	2450868	68.4	100
Malignant neoplasms	136	0.0	2.1	374	0.1	5.9	2477	0.1	38.7	3408	1.6	53.3	6396	0.2	100
Diabetes mellitus	154	0.0	0.4	824	0.2	2.2	31056	1.4	82.0	5833	2.7	15.4	37867	1.1	100
Neuropsychiatric conditions	142069	21.9	10.5	147031	29.1	10.9	1021630	46.2	75.7	37997	17.6	2.8	1348728	37.7	100
Sense organ diseases	3143	0.5	1.3	10471	2.1	4.2	166483	7.5	67.3	67344	31.1	27.2	247441	6.9	100
Cardiovascular diseases	1539	0.2	2.4	2162	0.4	3.4	37382	1.7	58.8	22480	10.4	35.4	63562	1.8	100
Respiratory diseases	28885	4.4	13.8	47483	9.4	22.7	123212	5.6	59.0	9337	4.3	4.5	208916	5.8	100
Digestive diseases	11681	1.8	9.8	9019	1.8	7.5	79033	3.6	66.2	19722	9.1	16.5	119455	3.3	100
Musculoskeletal diseases	1457	0.2	1.2	9675	1.9	8.3	86993	3.9	74.5	18637	8.6	16.0	116763	3.3	100
Other noncommunicable conditions	137633	21.2	45.6	58339	11.6	19.3	89442	4.0	29.6	16325	7.5	5.4	301739	8.4	100
III. Injuries	55354	8.5	9.9	138858	27.5	24.9	353026	16.0	63.4	9362	4.3	1.7	556600	15.5	100

Note: See appendix 2 for countries in each WHO Sub-Region in the Americas

Source: Calculations using data provided by the WHO 2004.

Table III.4
Causes of Years Lived with Disabilities for Women by Age Group in AMRO A (WHO Sub-region with very low child mortality and low adult mortality), 2002

Cause	AMRO A														
	0-4			5-14			15-59			60-80+			Total		
	YLDs	% group	% cause	YLDs	% group	% cause	YLDs	% group	% cause	YLDs	% group	% cause	YLDs	% group	% cause
All Causes	550594	100	4.0	673796	100	4.9	9591364	100	69.2	3045477	100	22.0	13 861 231	100	100
I. Communicable, maternal, perinatal and nutritional conditions	178021	32.3	21.8	42733	6.3	5.2	563190	5.9	69.1	31389	1.0	3.8	815 332	5.9	100
Infectious and parasitic diseases	50972	9.3	22.3	14906	2.2	6.5	154999	1.6	67.8	7866	0.3	3.4	228 744	1.7	100
Nutritional deficiencies	19170	3.5	7.7	10337	1.5	4.2	198168	2.1	79.7	20858	0.7	8.4	248 533	1.8	100
II. Non-communicable diseases	343917	62.5	2.7	555839	82.5	4.4	8722464	90.9	69.3	2971468	97.6	23.6	12 593 689	90.9	100
Malignant neoplasms	374	0.1	0.1	692	0.1	0.1	338787	3.5	67.2	164083	5.4	32.6	503 936	3.6	100
Diabetes mellitus	229	0.0	0.1	1028	0.2	0.2	314647	3.3	71.0	127070	4.2	28.7	442 975	3.2	100
Neuropsychiatric conditions	78149	14.2	1.2	299892	44.5	4.5	5338603	55.7	79.3	1015947	33.4	15.1	6 732 591	48.6	100
Sense organ diseases	4	0.0	0.0	112	0.0	0.0	507898	5.3	53.3	444561	14.6	46.7	952 575	6.9	100
Cardiovascular diseases	691	0.1	0.1	1185	0.2	0.2	380046	4.0	50.3	373979	12.3	49.5	755 901	5.5	100
Respiratory diseases	53317	9.7	5.3	168869	25.1	16.8	605202	6.3	60.2	177311	5.8	17.6	1 004 699	7.2	100
Digestive diseases	13653	2.5	3.3	6002	0.9	1.4	263976	2.8	63.3	133190	4.4	32.0	416 821	3.0	100
Musculoskeletal diseases	2797	0.5	0.3	31029	4.6	3.2	553004	5.8	57.5	375445	12.3	39.0	962 276	6.9	100
Other noncommunicable conditions	194701	35.4	23.7	47029.7	7.0	5.7	420301.2	4.4	51.1	159881.3	5.2	19.5	821 913	5.9	100
III. Injuries	28656	5.2	6.3	75224	11.2	16.6	305709	3.2	67.6	42620	1.4	9.4	452 210	3.3	100

Note: See appendix 2 for countries in each WHO Sub-Region in the Americas

Source: Calculations using data provided by the WHO 2004.

Table III.5
Causes of Years Lived with Disabilities for Women by Age Group in AMRO B (WHO Sub-region with low child mortality and low adult mortality), 2002

Cause	AMRO B														
	0-4			5-14			15-59			60-80+			Total		
	YLDs	% group	% cause	YLDs	% group	% cause	YLDs	% group	% cause	YLDs	% group	% cause	YLDs	% group	% cause
All Causes	2874671	100	13.3	2036712	100	9.4	14098388	100	65.4	2551354	100	11.8	21561124	100	100
I. Communicable, maternal, perinatal and nutritional conditions	1083806	37.7	32.8	275762	13.5	8.4	1888355	13.4	57.2	52455.73	2.1	1.6	3300380	15.3	100
Infectious and parasitic diseases	220380	7.7	16.1	181174	8.9	13.2	922843.1	6.5	67.3	47524.9	1.9	3.5	1371922	6.4	100
Nutritional deficiencies	163915	5.7	61.5	32864	1.6	12.3	67179.8	0.5	25.2	2423.795	0.1	0.9	266382	1.2	100
II. Non-communicable diseases	1677204	58.3	9.7	1517633	74.5	8.8	11541067	81.9	67.1	2466369	96.7	14.3	17202272	79.8	100
Malignant neoplasms	833	0.0	0.4	1579	0.1	0.8	164997	1.2	82.3	33040.09	1.3	16.5	200449	0.9	100
Diabetes mellitus	157	0.0	0.0	996	0.0	0.3	233790.4	1.7	69.7	100296.3	3.9	29.9	335240	1.6	100
Neuropsychiatric conditions	832480	29.0	9.1	769885	37.8	8.4	6998450	49.6	76.7	521875.9	20.5	5.7	9122690	42.3	100
Sense organ diseases	300	0.0	0.0	1326	0.1	0.1	992404.6	7.0	52.1	910836.2	35.7	47.8	1904866	8.8	100
Cardiovascular diseases	2430	0.1	0.4	16293	0.8	2.9	343658.5	2.4	60.4	206633.2	8.1	36.3	569015	2.6	100
Respiratory diseases	135107	4.7	10.4	311050	15.3	24.0	749963	5.3	57.9	98821.6	3.9	7.6	1294941	6.0	100
Digestive diseases	43217	1.5	5.7	37099	1.8	4.9	535689.5	3.8	70.4	144972.9	5.7	19.1	760979	3.5	100
Musculoskeletal diseases	5502	0.2	0.4	82039	4.0	6.4	883712.8	6.3	69.5	300863.1	11.8	23.7	1272117	5.9	100
Other noncommunicable conditions	657177	22.9	37.7	297368	14.6	17.1	638401.5	4.5	36.6	149029.3	5.8	8.6	1741976	8.1	100
III. Injuries	113661	4.0	10.7	243317	11.95	22.99	668965.3	4.7	63.2	32529.69	1.3	3.1	1058472	4.9	100

Note: See appendix 2 for countries in each WHO Sub-Region in the Americas

Source: Calculations using data provided by the WHO 2004.

Table III.6
Causes of Years Lived with Disabilities for Women by Age Group in AMRO D (WHO Sub-region with high child mortality and high adult mortality), 2002

Cause	AMRO D														
	0-4			5-14			15-59			60-80+			Total		
	YLDs	% group	% cause	YLDs	% group	% cause	YLDs	% group	% cause	YLDs	% group	% cause	YLDs	% group	% cause
All Causes	604608	100	16.08	493841	100	13.1	2395445	100	63.7	265197	100	7.1	3759091	100	100
I. Communicable, maternal, perinatal and nutritional conditions	266515	44.08	27.35	97561	19.8	10.0	603663	25.2	62.0	6634	2.5	0.7	974373	25.9	100
Infectious and parasitic diseases	55325	9.15	19.95	57114	11.6	20.6	161138	6.7	58.1	3777	1.4	1.4	277353	7.4	100
Nutritional deficiencies	55910	9.25	32.99	20542	4.2	12.1	90714	3.8	53.5	2304	0.9	1.4	169470	4.5	100
II. Non-communicable diseases	317042	52.44	12.24	337679	68.4	13.0	1681328	70.2	64.9	253485	95.6	9.8	2589533	68.9	100
Malignant neoplasms	139	0.02	0.62	251	0.1	1.1	17998	0.8	80.8	3879	1.5	17.4	22267	0.6	100
Diabetes mellitus	121	0.02	0.27	559	0.1	1.3	36151	1.5	81.5	7516	2.8	16.9	44347	1.2	100
Neuropsychiatric conditions	141100	23.34	10.03	185406	37.5	13.2	1022487	42.7	72.7	57324	21.6	4.1	1406317	37.4	100
Sense organ diseases	2288	0.38	0.82	8465	1.7	3.0	183932	7.7	65.9	84611	31.9	30.3	279295	7.4	100
Cardiovascular diseases	432	0.07	0.70	2327	0.5	3.8	37222	1.6	60.7	21314	8.0	34.8	61295	1.6	100
Respiratory diseases	26367	4.36	15.70	59279	12.0	35.3	76881	3.2	45.8	5386	2.0	3.2	167913	4.5	100
Digestive diseases	12846	2.12	10.43	7290	1.5	5.9	82880	3.5	67.3	20157	7.6	16.4	123172	3.3	100
Musculoskeletal diseases	1135	0.19	0.65	16881	3.4	9.7	123909	5.2	71.0	32477	12.2	18.6	174402	4.6	100
Other noncommunicable conditions	132614	21.93	42.71	57220	11.6	18.4	99867	4.2	32.2	20823	7.9	6.7	310524.41	8.3	100
III. Injuries	21052	3.48	10.79	58601	11.9	30.0	110454	4.6	56.6	5079	1.9	2.6	195185	5.2	100

Note: See appendix 2 for countries in each WHO Sub-Region in the Americas

Source: Calculations using data provided by the WHO 2004.

IV. Specific Causes of Disease that lead to Disability in the CISS-Regions

The following figures were constructed using data provided by the WHO.

Figure IV.1

YLDs per 100,000 by Specific Communicable Diseases, Maternal and Perinatal Conditions and Nutritional Deficiencies in the Americas by CISS-Regions, 2002

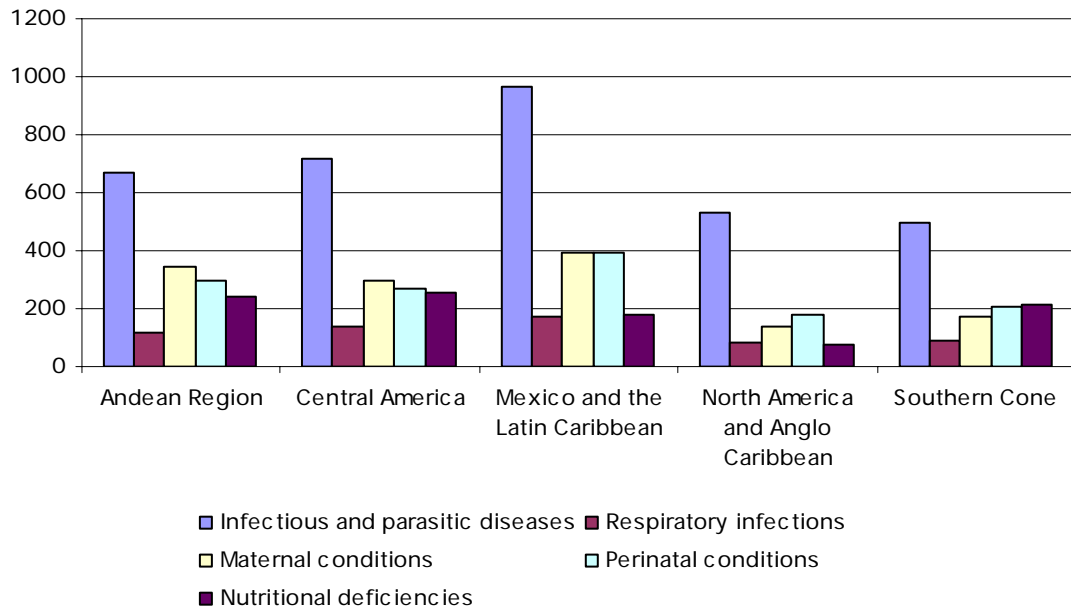


Figure IV.2

YLDs per 100,000 by Specific Non-communicable Diseases in the Americas by CISS-Region, 2002

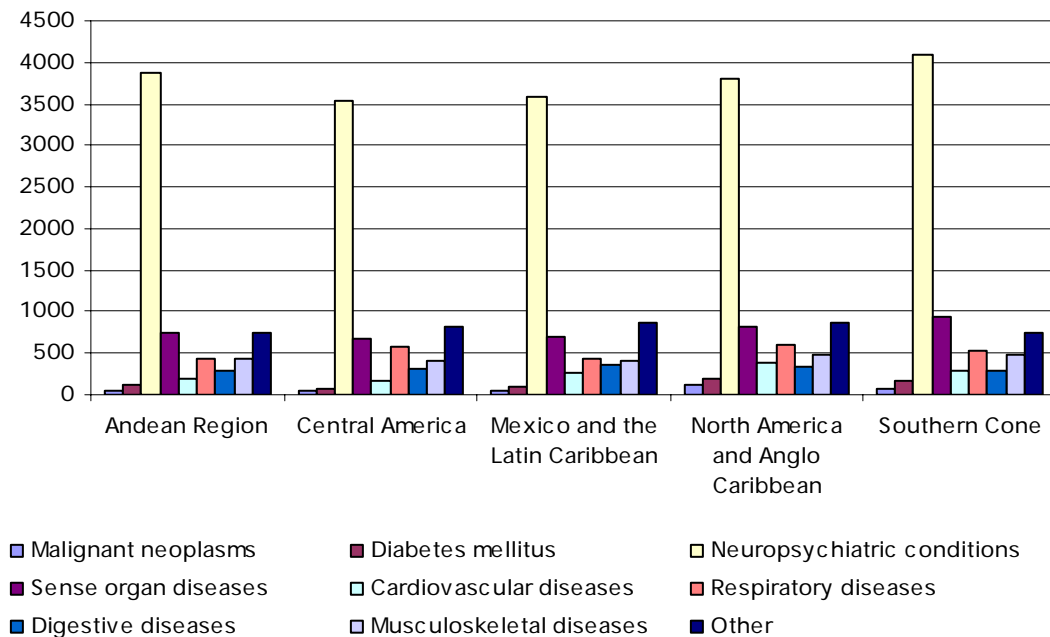
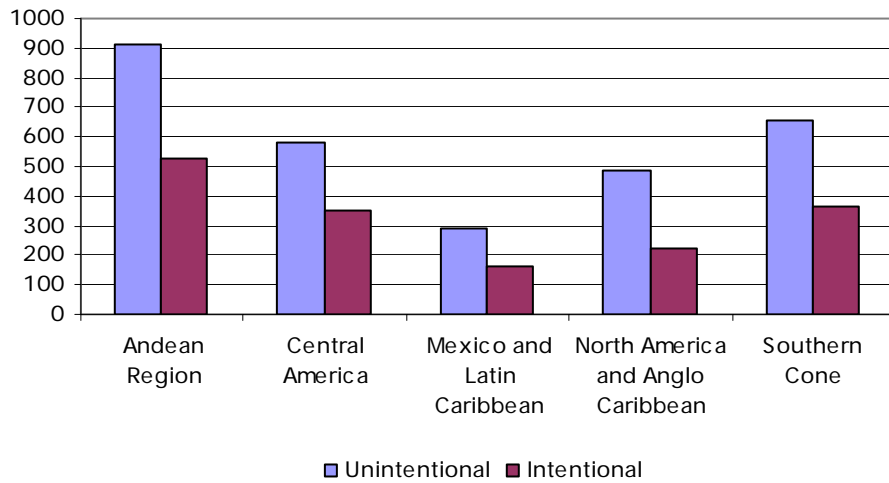


Figure IV.3
YLDs per 100,000 Caused by Injuries in the Americas by CISS-Region, 2002



IV.1 The Andean Region

Figure IV.4
YLDs per 100,000 by Specific Communicable Diseases, Maternal and Perinatal Conditions and Nutritional Deficiencies in the Andean Region, 2002

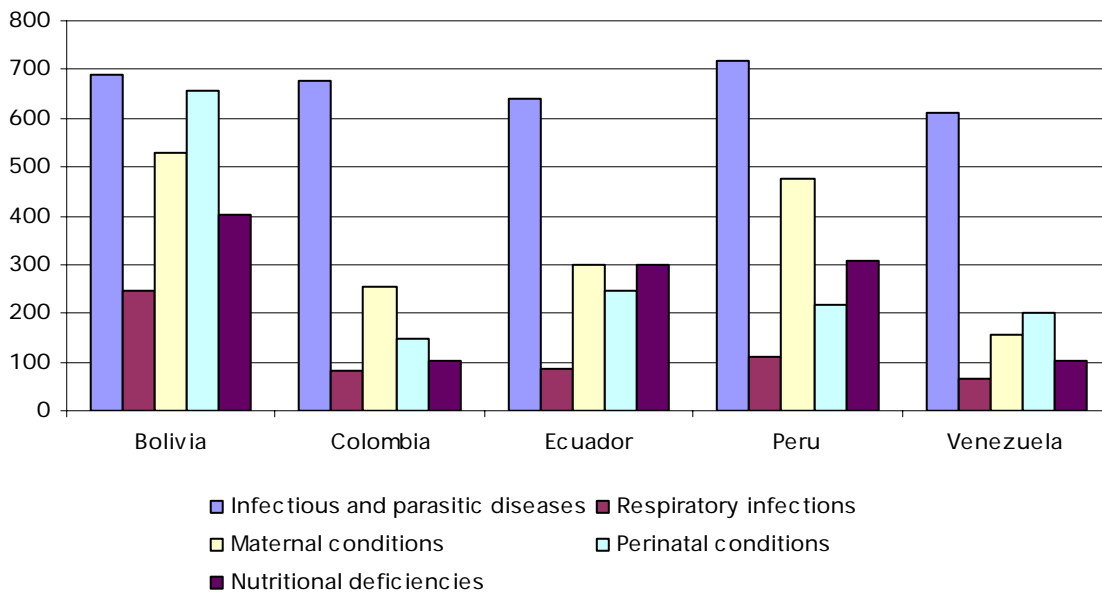


Figure IV.5
YLDs per 100,000 by Specific Non-communicable Diseases in the Andean Region, 2002

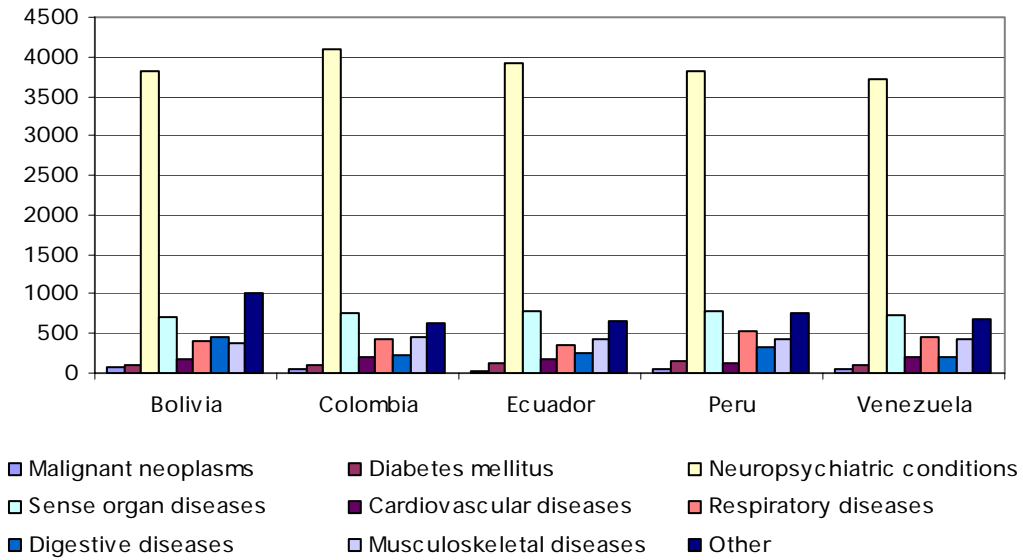
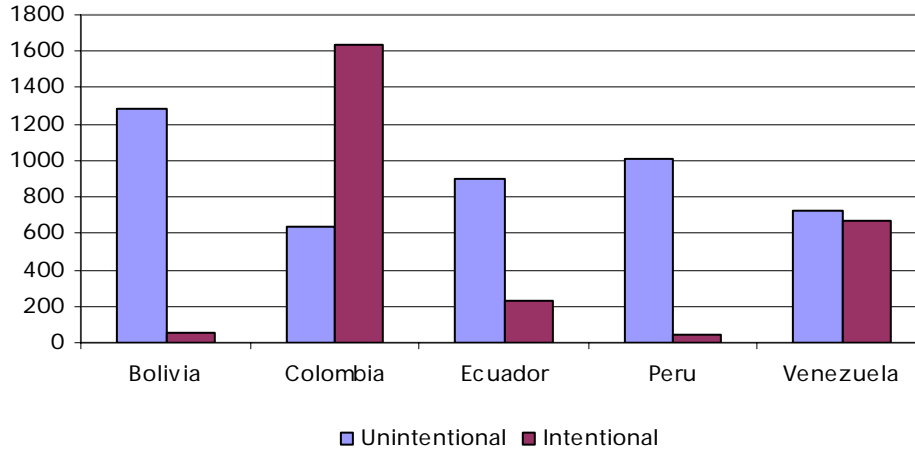


Figure IV.6
YLDs per 100,000 Caused by Injuries in the Andean Region, 2002



IV.2 Central America

Figure IV.7
YLDs per 100,000 by Specific Communicable Diseases, Maternal and Perinatal Conditions and Nutritional Deficiencies in Central America, 2002

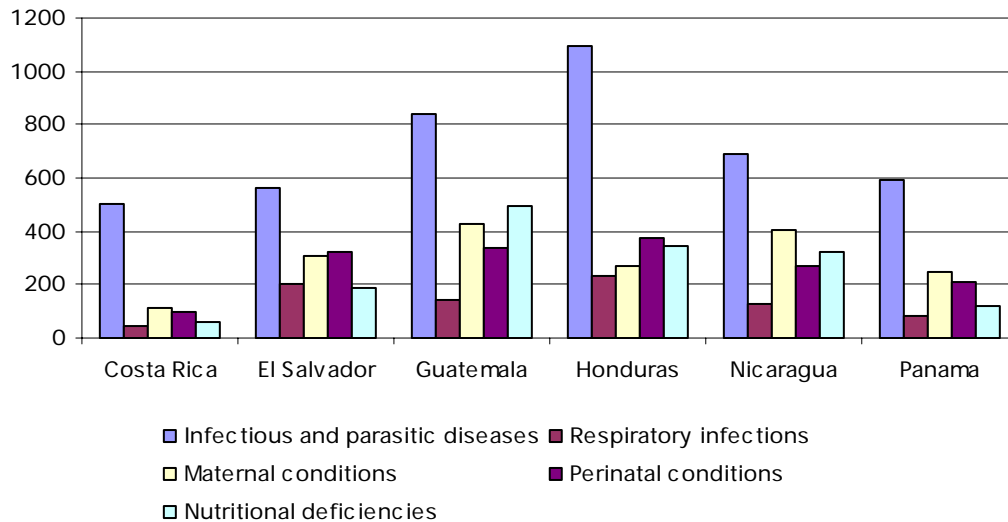


Figure IV.8
YLDs per 100,000 by Specific Non-communicable Diseases in Central America, 2002

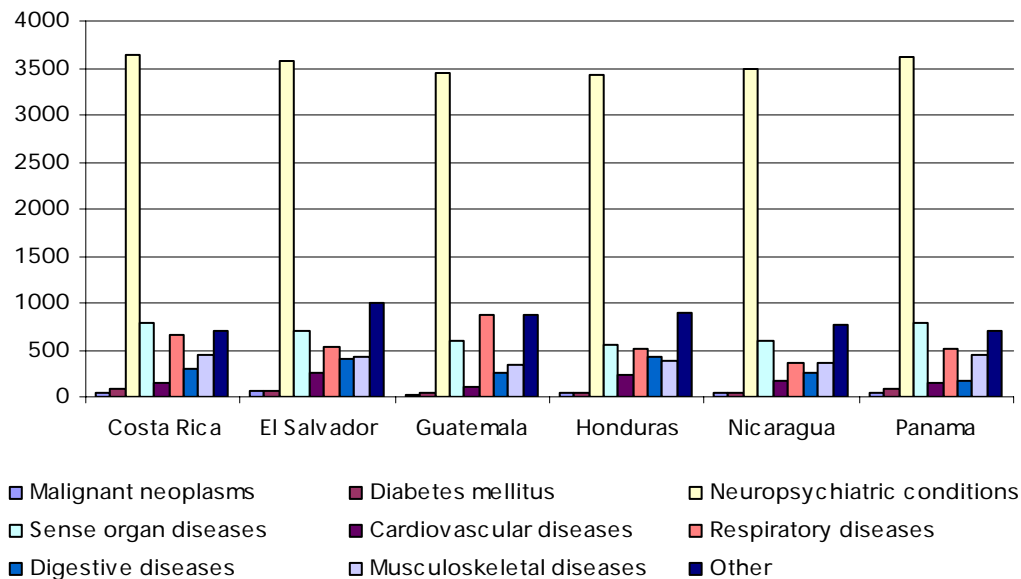
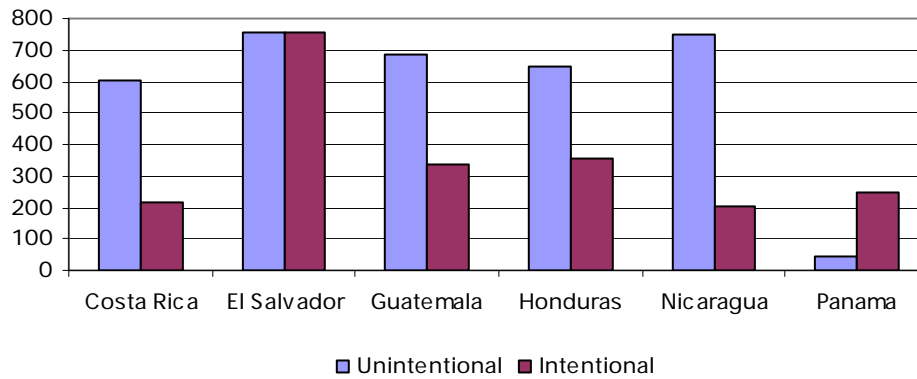


Figure IV.9
YLDs per 100,000 Caused by Injuries in Central America, 2002



IV.3 Southern Cone

Figure IV.10
YLDs per 100,000 by Specific Communicable Diseases, Maternal and Perinatal Conditions and Nutritional Deficiencies in the Southern Cone, 2002

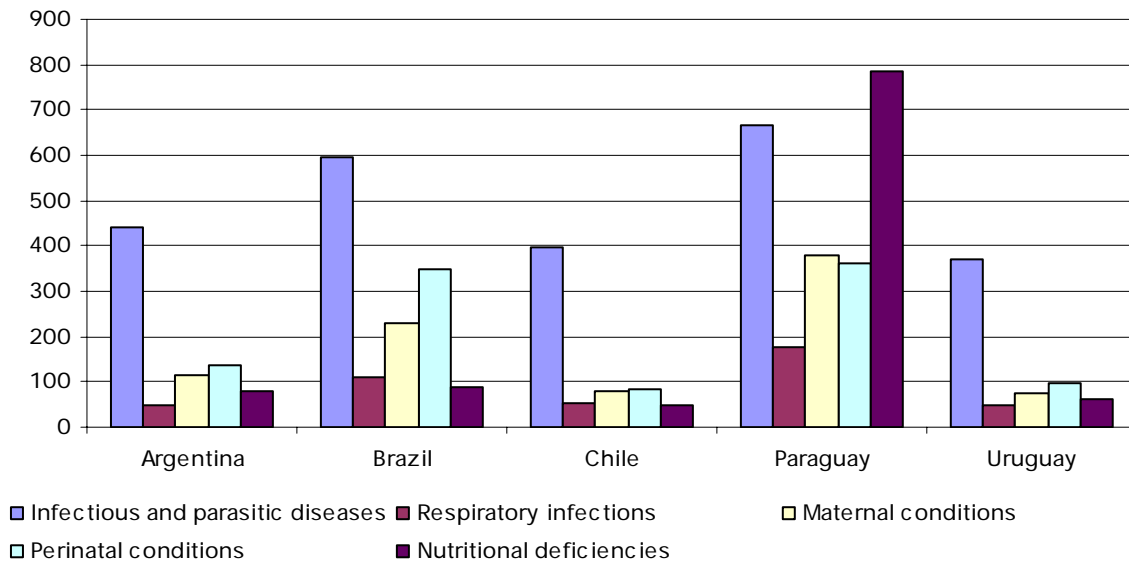


Figure IV.11
YLDs per 100,000 by Specific Non-communicable Diseases in Central America, 2002

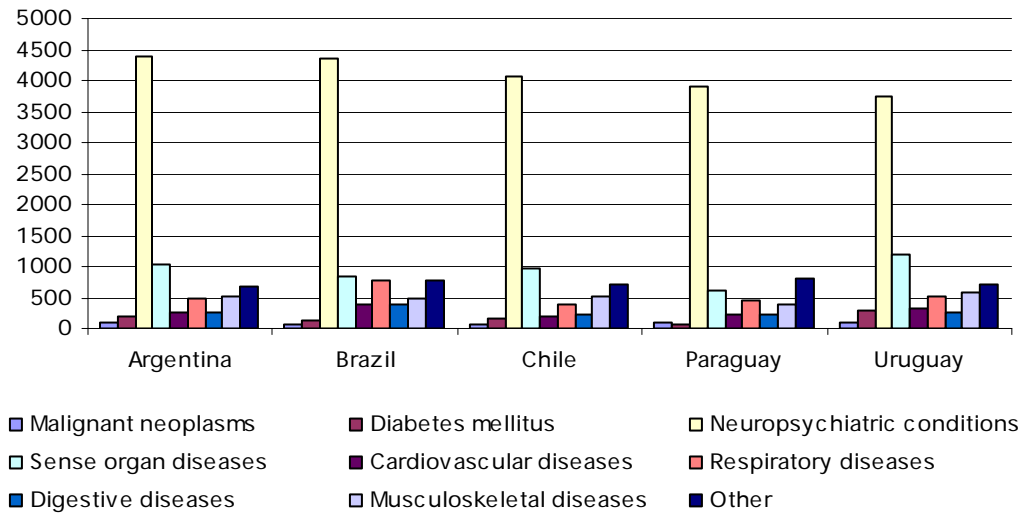
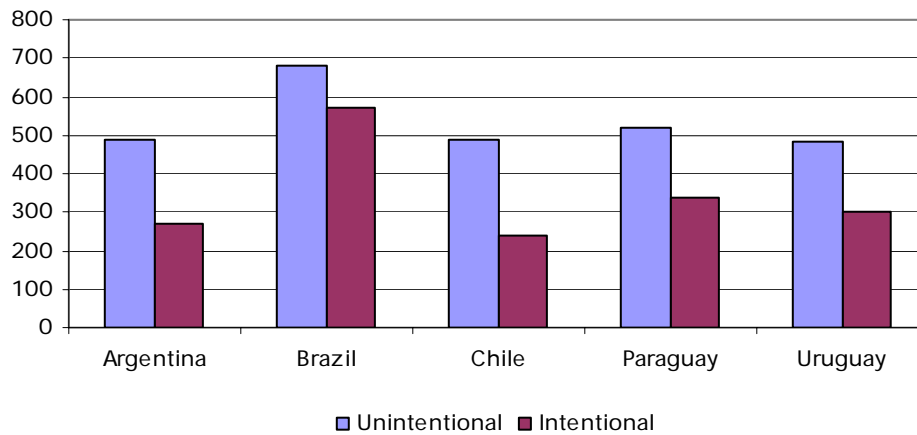


Figure IV.12
YLDs per 100,000 Caused by Injuries in the Southern Cone, 2002



IV.3 North America and English-Speaking Caribbean

Figure IV.13
YLDs per 100,000 by Specific Communicable Diseases, Maternal and Perinatal Conditions and Nutritional Deficiencies in North America and English-Speaking Caribbean, 2002

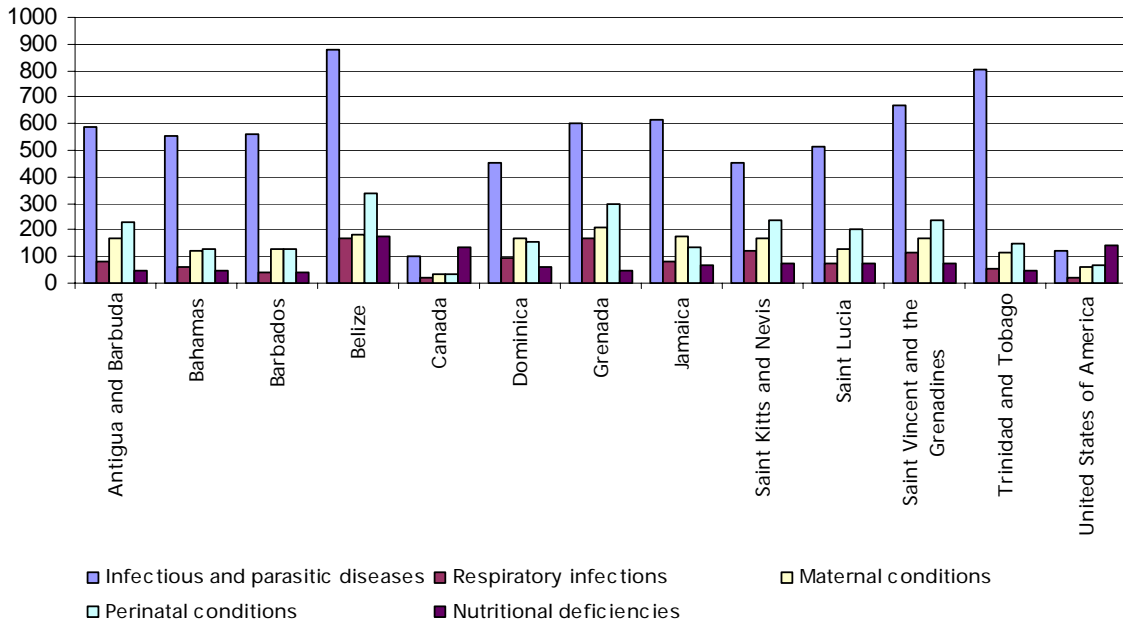


Figure IV.14
YLDs per 100,000 by Specific Non-communicable Diseases in North America and English-Speaking Caribbean, 2002

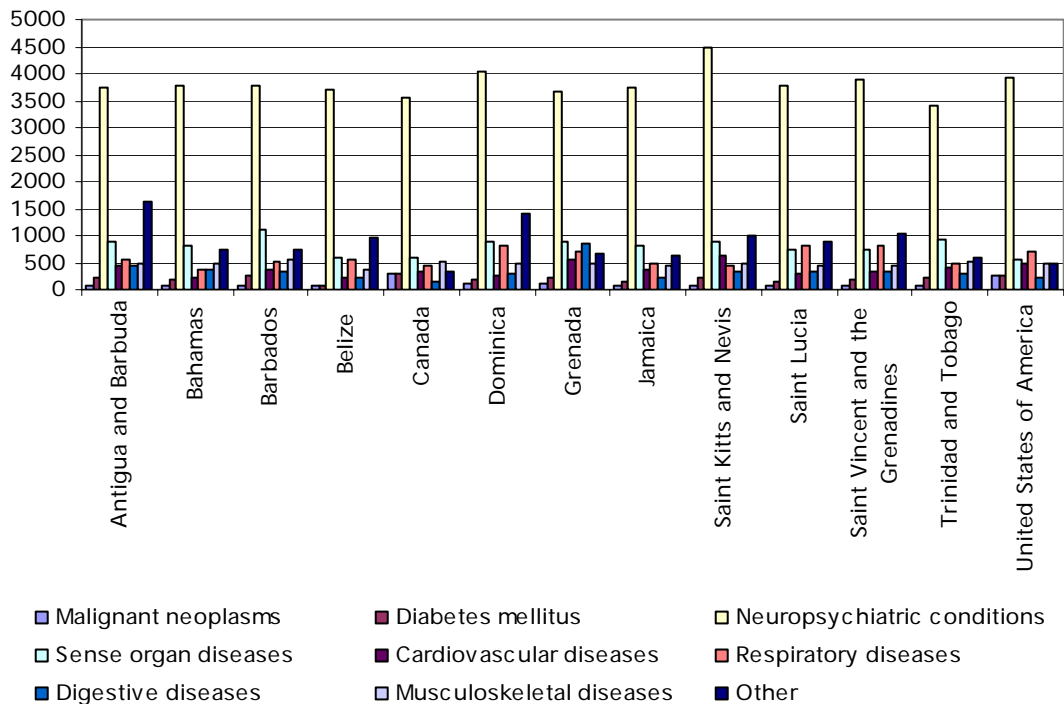
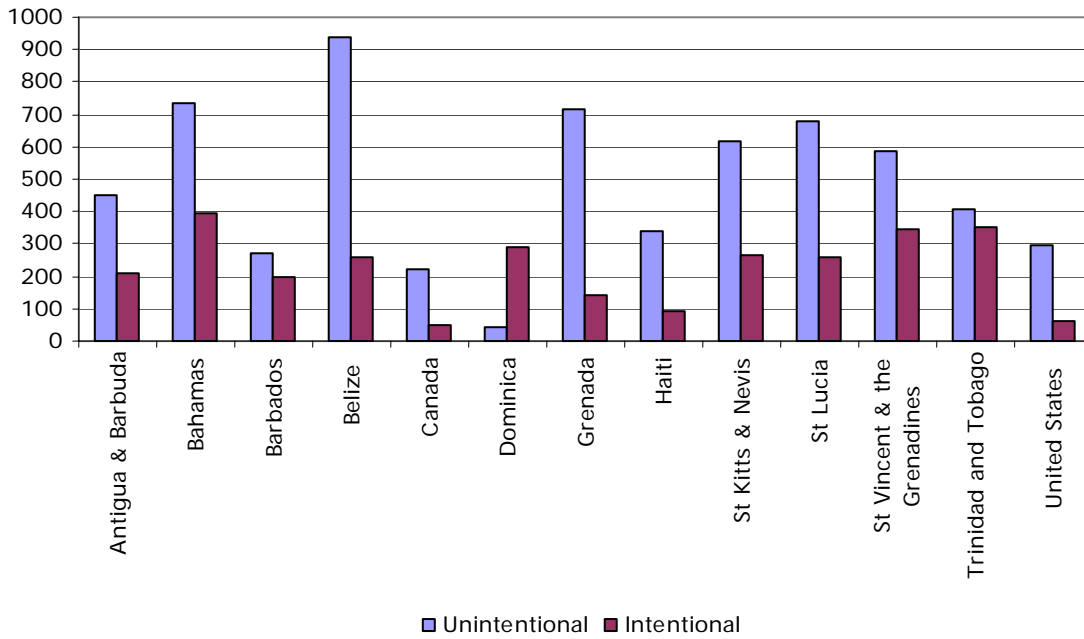


Figure IV.15
YLDs per 100,000 Caused by Injuries in North America and English-Speaking Caribbean, 2002



IV.3 Mexico and the Latin Caribbean

Figure IV.16
YLDs per 100,000 by Specific Communicable Diseases, Maternal and Perinatal Conditions and Nutritional Deficiencies in Mexico and the Latin Caribbean, 2002

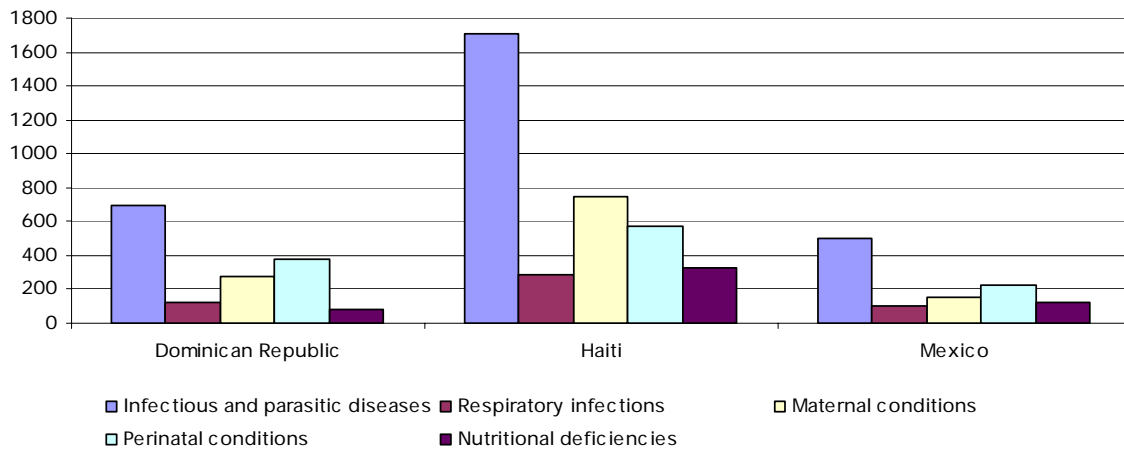


Figure IV.17
YLDs per 100,000 by Specific Non-communicable Diseases in Mexico and the Latin Caribbean, 2002

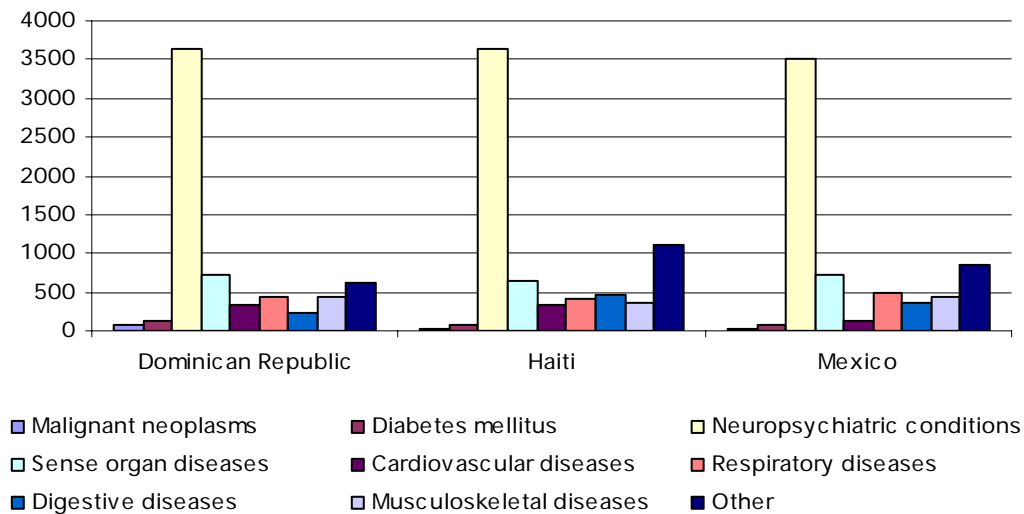
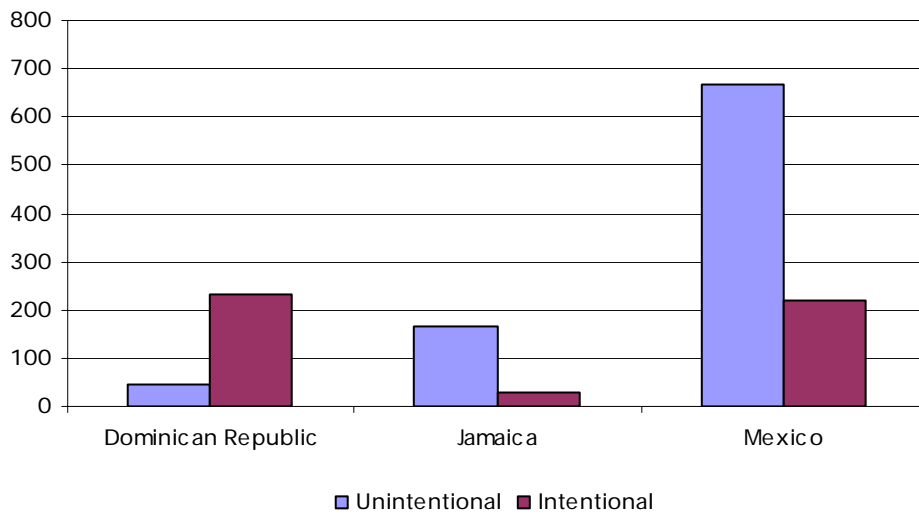


Figure IV.18
YLDs per 100,000 Caused by Injuries in Mexico and the Latin Caribbean, 2002



References

Mathers CD, Vos T, Lopez AD, Salomon J, Ezzati M (ed.) 2001. National Burden of Disease Studies: A Practical Guide. Edition 2.0. Global Program on Evidence for Health Policy. Geneva: World Health Organization

WHO. Global Burden of Disease Project. 2004. Available online at:
<http://www.who.int/healthinfo/bodestimates/en/index.html>

APPENDIX 1

WHO-REGIONS

<i>AFRO</i>	<i>AMRO</i>	<i>EMRO</i>	<i>EURO</i>	<i>SEARO</i>	<i>WPRO</i>
Algeria	Antigua and Barbuda	Afghanistan	Albania	Bangladesh	Australia
Angola	Argentina	Bahrain	Andorra	Bhutan	Brunei Darussalam
Benin	Bahamas	Djibouti	Armenia	Democratic People's Republic of Korea	Cambodia
Botswana	Barbados	Egypt	Austria	India	China
Burkina Faso	Belize	Iran (Islamic Republic of)	Azerbaijan	Indonesia	Cook Islands
Burundi	Bolivia	Iraq	Belarus	Maldives	Fiji
Cameroon	Brazil	Jordan	Belgium	Myanmar	Japan
Cape Verde	Canada	Kuwait	Bosnia and Herzegovina	Nepal	Kiribati
Central African Republic	Chile	Lebanon	Bulgaria	Sri Lanka	Lao People's Democratic Republic
Chad	Colombia	Libyan Arab Jamahiriya	Croatia	Thailand	Malaysia
Comoros	Costa Rica	Morocco	Cyprus	Timor-Leste	Marshall Islands
Congo	Cuba	Oman	Czech Republic		Micronesia (Federated States of)
Côte d'Ivoire	Dominica	Pakistan	Denmark		Mongolia
Democratic Republic of the Congo	Dominican Republic	Qatar	Estonia		Nauru
Equatorial Guinea	Ecuador	Saudi Arabia	Finland		New Zealand
Eritrea	El Salvador	Somalia	France		Niue
Ethiopia	Grenada	Sudan	Georgia		Palau
Gabon	Guatemala	Syrian Arab Republic	Germany		Papua New Guinea
Gambia	Guyana	Tunisia	Greece		Philippines
Ghana	Haiti	United Arab Emirates	Hungary		Republic of Korea
Guinea	Honduras	Yemen	Iceland		Samoa
Guinea-Bissau	Jamaica		Ireland		Singapore
Kenya	Mexico		Israel		Solomon Islands
Lesotho	Nicaragua		Italy		Tonga
Liberia	Panama		Kazakhstan		Tuvalu
Madagascar	Paraguay		Kyrgyzstan		Vanuatu
Malawi	Peru		Latvia		Viet Nam
Mali	Saint Kitts and Nevis		Lithuania		
Mauritania	Saint Lucia		Luxembourg		
Mauritius	Saint Vincent and the Grenadines		Malta		
Mozambique	Suriname		Monaco		
Namibia	Trinidad and Tobago		Netherlands		
Niger	United States of America		Norway		
Nigeria	Uruguay		Poland		
Rwanda	Venezuela (Bolivarian Republic of)		Portugal		

Sao Tome
and Principe
Senegal

Seychelles
Sierra Leone

South Africa
Swaziland
Togo
Uganda
United
Republic of
Tanzania
Zambia
Zimbabwe

Republic of
Moldova
Romania
Russian
Federation
San Marino
Serbia and
Montenegro
Slovakia
Slovenia
Spain

Sweden
Switzerland
Tajikistan
The former
Yugoslav
Republic of
Macedonia
Turkey
Turkmenistan
Ukraine
United Kingdom
Uzbekistan

APPENDIX 2

WHO-MORTALITY-REGIONS IN THE AMERICAS (AMRO)

Sub-Region A: Very low child mortality and low adult mortality

Sub-Region B: Low child mortality and low adult mortality

Sub-Region D: High child mortality and high adult mortality

Amro A	Amro B	Amro D
Canada	Antigua and Barbuda	Bolivia
Cuba	Argentina	Ecuador
United States of America	Bahamas	Guatemala
	Barbados	Haiti
	Belize	Nicaragua
	Brazil	Peru
	Chile	
	Colombia	
	Costa Rica	
	Dominica	
	Dominican Republic	
	El Salvador	
	Grenada	
	Guyana	
	Honduras	
	Jamaica	
	Mexico	
	Panama	
	Paraguay	
	Saint Kitts and Nevis	
	Saint Lucia	
	Saint Vincent and the Grenadines	
	Suriname	
	Trinidad and Tobago	
	Uruguay	
	Venezuela (Bolivarian Republic of)	